

# Monthly magazine



شركة ريسوت للإسمنت ش.م.ع.  
Raysut Cement Company S.A.O.G

All-time highest monthly  
sales of 10,011 MT in  
June 2021

International Quality  
Laboratory Team Visit  
Sohar Factory Quality  
Control Laboratory

The arrival of the Volvo shovel  
model L220 A

[WWW.RAYSUTCEMENT.OM](http://WWW.RAYSUTCEMENT.OM)



**CEO:Mr.Joey**

## Opening word

**DEAR COLLEAGUES,**

**WHILST THE PANDEMIC CONTINUES WITH IT'S DEVASTATING IMPACT ON PEOPLE'S LIVES AND THE ECONOMY, WE ARE HAPPY THAT THE VACCINATION PROGRAMME IS MOVING FORWARD WELL.**

**IN SPITE OF THE CHALLENGES, OUR DUQM PROJECT IS MOVING AHEAD ALBEIT A MONTH BEHIND SCHEDULE. ONCE THIS UNIT IS COMMISSIONED, WE CAN SUPPLY OUR INDIAN OCEAN MARKETS FROM DUQM, EASING OUT SOME OF THE CONGESTION AT SALALAH PORT.**

**OUR WHRS AND COOLER PROJECTS ARE ALSO APPROACHING COMPLETION WHICH WILL LEAD TO SIGNIFICANT COST REDUCTIONS.**

**LET'S ALL CONTINUE TO STAY SAFE AND HOPE FOR THE BEST...**



شركة ريسوت للإسمنت  
Raysut Cement Company



Raysut Cement News

## shovel New Volvo

**Volvo**

**L220**



### New Shovel VOLVO:

L220 Model is commissioned for RCC Quarry, This shovel is the replacement for the old CAT excavator and Komatsu Shovel. This will improve raw materials handling for feeding Crushers.







# Highest monthly sales at all



## Commercial



- » Highest Ever Monthly Sales of 10,011 mts in June 2021
- » Achieved Target in all the three Grades for the first time
- » Invoiced USD 1 million in a single month for the first time in the history of the company
- » Achieved 122% monthly budgeted volumes despite lockdown and strict COVID-19 measures
- » Dispatched highest volumes of 4,011 mts from the terminal for the first time in 2021
- » Clocks a growth of 91% compared to last year same period

## Business Development



- » Proud to be associated as the Exclusive Cement Supplier to One of the biggest local contractor, Rasheed Carpentry (RCC) for their latest project of a New School for USD 2.1 million in Hulhumale.
- » Bagged another MTCC Project for supply of Cement for Waste Management Project through Ready-Mix.
- » Afcon has won the bid to build the Greater Male' bridge project. Negotiations underway since March 2021 for Cement & Aggregate supply.





## visit Quality Control Laboratory

International quality lab team visited SCF quality control laboratory on 5th of July 2021. The SCF team demonstrated them the best industrial practices being followed in Sohar Cement Factory.



### Sohar Factory Visit

Group of students from university of technology and applied sciences visited SCF on 6th of July 2021, SCF team showed them the complete operation of production and packing of cement.



### Afforestation

SCF completed landscaping near the main administrative building .



مصنع إسمنت صحر  
SOHAR CEMENT FACTORY

## ◀◀ Sohar Cement Factory News



### Projects

**Q2 2021 for environmental monitoring done**



**The Painting Weight Bright No.1**



**The Painting Weight Bright No.2**



**The painting the Security Gate No.1**



**The fence done on Admin Office**







Pioneer Cement Industries  
بايونير لصناعة الإسمنت



Pioneer cement industry news



## SAFETY

### We achieved:

LTI

Zero

Medical

Zero

Incident

Zero

- Total Recordable Incident YTD 2 no.r
- New disinfection fogger machine installed at main gate for disinfected all cars and trucks, minimize the chance of spreading corona virus.
- Training on Spillages & Emergency response



## ADMIN

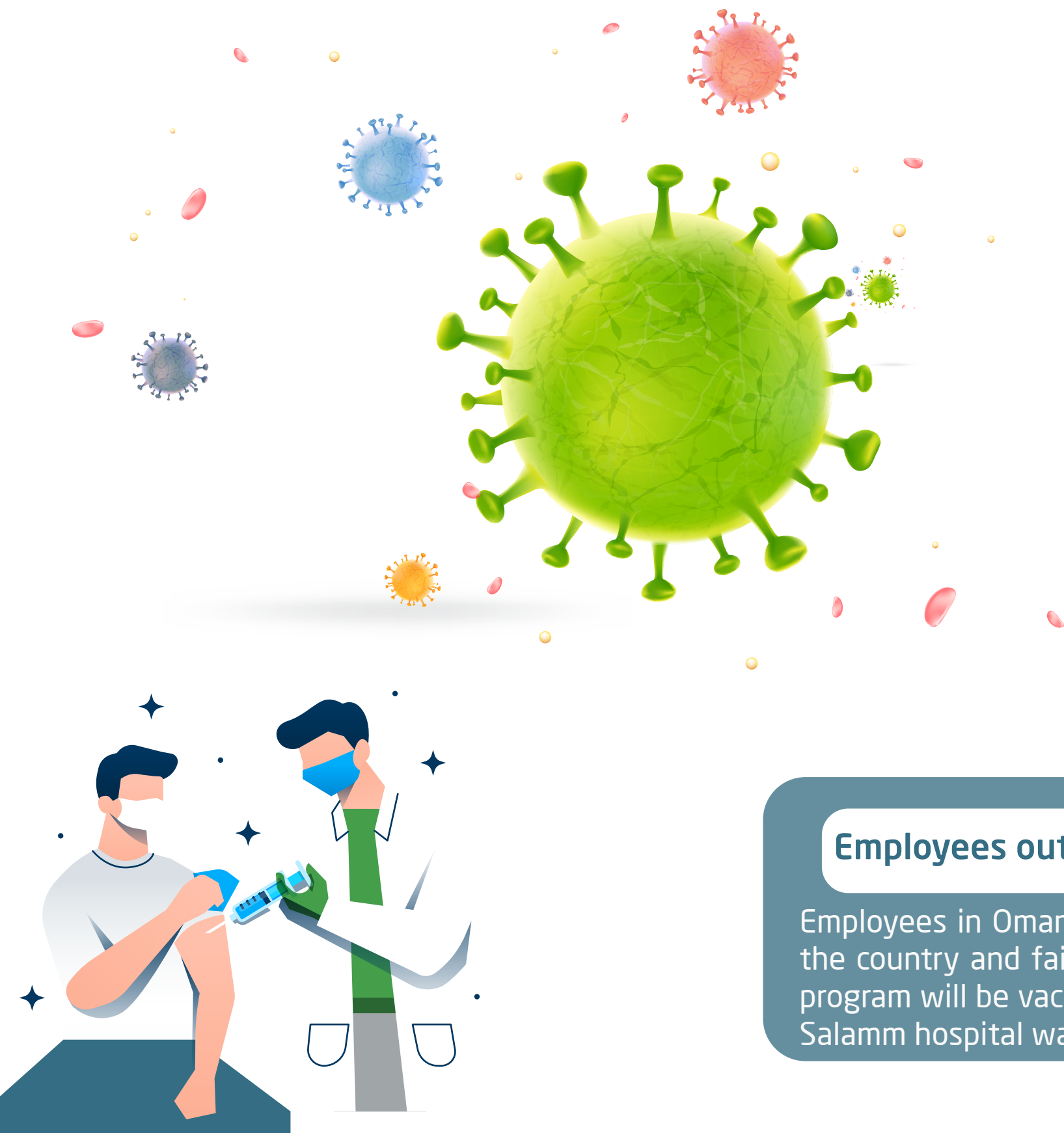
- 100% Employees completed COVID Vaccination
- Civil defence, Building Safety & Trade License renewed.



## OPERATION

- 100% Employees completed COVID Vaccination
- Electricity consumption achieved as per the FEWA target to save AED 1 million for the month.

# Safety and Security



## Vaccination Program

# COVID-19

### RCC

Vaccination program rolled out and started with employees at Salalah future dates to be sent for Dqum, Sohar

### Pioneer

Over 95% of all employees at Pioneer Industries Limited have been vaccinated

### Employees out of Country

Employees in Oman who were out of the country and failed to register for program will be vaccinated by Badr Al Salamm hospital walk in clinic.

### Maldives

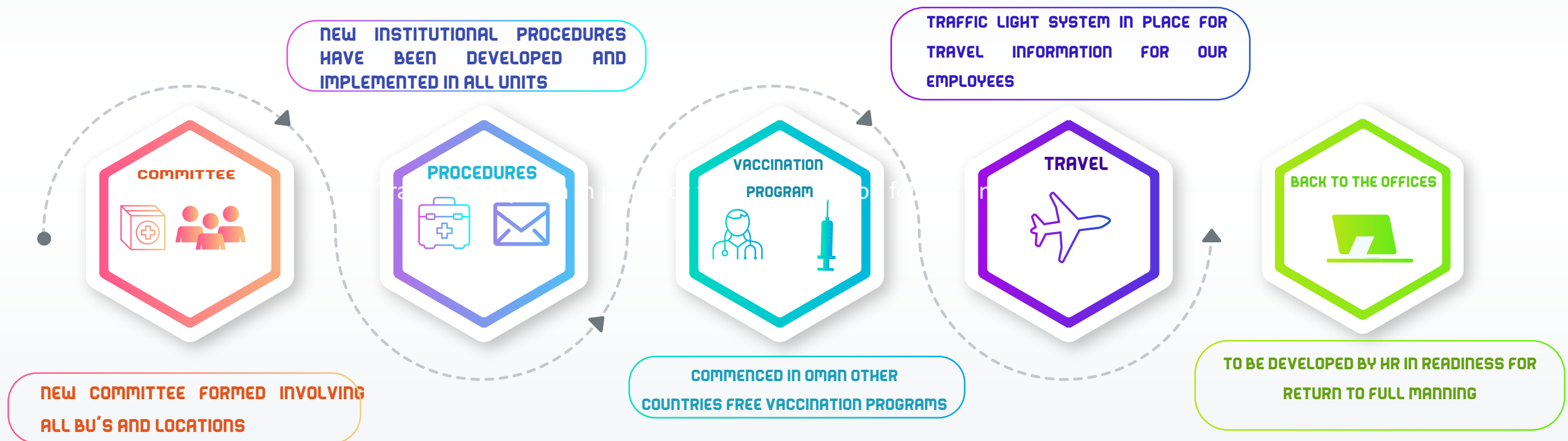
80% of all employees have received first dose of vaccination





## Business Updates

# COVID-19



# Safety and Security

news

miscellaneous

## Dqum

- Implemented new SEZAD reporting procedures and developed environmental folder
- Implemented Housekeeping improvements across the business

## Group

- New corporate procedures introduced for Absence, Travel, Managing Through Covid
- New sanitizing system implemented at BU's for offices and vehicles
- Risk Assessment internal audit undertaken at SCF

## RCC

- WHR Project progressing with no safety concerns
- Recycled over 2000 ton of materials in 2021 - Wood, Steel, Oil, Plastics
- New security cameras installed - Administration building car park

## SCF

- Improved lighting across plant changing lights to more energy efficient LED lights
- Implemented green spaces program for development of green landscaped areas in plant
- Installed new security cameras at Gate two and three



## PIC

- Upgrading fire system replacing smoke detectors for heat detectors in sensitive areas
- Civil Defence and building safety licence renewed
- ISO45001:2015 implemented





The formula for calculating incidents is the number of recorded accidents in that year multiplied by 200,000 (to standardize the accident rate for 100 employees) and then divided by the number of employee labor hours worked. So the formula, again, is  $\text{accident rate} = (\text{number of accidents} \times 200,000) / \text{number of hours worked}$ .

### Report an accident

\_\_\_\_\_

\_\_\_\_\_

\_\_\_\_\_

\_\_\_\_\_

☒ \_\_\_\_\_

☒ \_\_\_\_\_

☒ \_\_\_\_\_

☒ \_\_\_\_\_

*[Signature]*

