



شركة ريسوت للإسمنت
Raysut Cement Company

MONTHLY MAGAZINE

for news

RAYSUT CEMENT COMPANY



More Information

www.raysutcement.om



Opening Page

CEO : Mr.Joey



Dear all

the world is witnessing a lot of changes where it affects both positively and negatively the business field, despite this matter, we will keep on building a global robust foundation and continue to evolve as we aim to become a value-products corporate group.

we will also focus so deeply on taking the challenge of creating new business globally aiming for long-term corporate value

Wishing everyone good health and happiness



+ (968) 23220600



info@raysutcement.com.om



www.raysutcement.om



Salalah – Raysut Industrial Area

PORTLAND LIMESTONE CEMENT إسمنت بورتلاندي حجر جيرى



إسمنت بورتلاندي حجر جيرى :

هو إسمنت ريسوت بورتلاندي حجر جيرى هو منتج صديق للبيئة ويعتبر مثاليا للاستخدام العام كبدل للإسمنت البورتلاندي فى مجموعة واسعة من التطبيقات مثل منتجات الخرسانة العامة و الأغراض العامة مثل أعمال وحدات البناء

PORTLAND LIMESTONE CEMENT :

Raysut Portland Limestone Cement is an Environment Friendly product comparable to OPC and suitable for majority of concrete concrete applications such as general purpose ready mix & pre-cast , concrete ,plaster, mortars for brick & block work ,concrete block etc.



Made in Oman

ملتزمون بالجودة,,
We Guarantee Quality



شركة ريسوت للإسمنت
Raysut Cement Company

www.raysutcement.com.om



RCC Plant - Salalah

- Successful Completion of surveillance audit for ISO 9001:2015 without any non-confirmatory. Audit was done by M/s BM Trada.
- Line 3 -Vertical Roller Mill Repairs are done successfully by our mechanical maintenance department.
- Gearbox maintenance is done Successfully, Vibrations under control after the repairs and replacement of needful spares, now mill running smoothly.



- VRM table & roller liner segments replacement done.



- WHR Project AQC - 3 & SP - 3 boiler interconnection completed. Line - 3 AQC - 3 & SP - 3 boil out under progress.



March/2022 export achievements



PRODUCT WISE EXPORTS- MAR 2022

PRODUCT	MT
OPC 50KG	30,000.00
PLC 50KG	84,725.00
SRC 50KG	3,143.00
CEMENT BULK - CEM I 42.5R CE PM CP -2 NF	7,740.00
CEMENT BULK - CEM I 52.5 N	52,552.51
CEMENT BULK - CEM II 42.5	12,000.00
OPC BULK	978.68
PLC BULK	29,405.52
SRC BULK	623.78
CEMENT BULK - CEM I 42.5 N	36,006.00
TOTAL- CEMENT	257,174.49



March/2022 export achievements



PRODUCT WISE EXPORTS- MAR 2022

COUNTRY	MT
YEMEN	13,671.23
SOMALIA	97,504.75
COMOROS	13,700.00
MADAGASCAR	47,500.00
MAURITIUS	71,058.51
SEYCHELLES	6,000.00
MAYOTTE	7,740.00
TOTAL-CEMENT	257,174.49
CLINKER	
JABAL SHAMS	45,509.00



مصنع إسمنت صحار
SOHAR CEMENT FACTORY

Received the Vodafone Oman team

- Sohar Cement Factory received the Vodafone Oman team, the third operator of telecommunications in the Sultanate. The visit also included an introductory presentation about the third operator and presenting gifts and offers to our employees.





➤ Improvements and Cost Reduction ➤ Initiatives

- Best Practices Implemented
Regular Monthly Inspection :-
 - Fire pump system
 - Fire extinguisher
 - Fire extinguisher



- Environmental monitoring for Q1 -2022, Workplace Noise Monitoring and stack emission monitoring are complete



- Training Q1 2022:
 - Training Isolation (LOTOTO)
How use safety harness
Near miss and risk assessment
KPI's SCF 2022
 - Safety Meeting
COVID-19 Awareness :
TBT 104





➤ Improvements and Cost Reduction ➤ Initiatives

➤ Isolation book is
print and implement



➤ Renewal license for XRF on LAP



➤ Install exit light ten pieces





Special Achievements



- Trees were planted between Gate No. 2 and Gate No. 3
The total the tree planting trees is 125 tree
- The total the tree planting trees is 13 tree
trees were planted near the compressed Room
- The total the tree planting trees is 138 tree
- The total number of trees is 233, which are divided into
 - ▶ Environment Agency 55 tree
 - ▶ Department of Afforestation and Gardens in Sohar 100 tree
 - ▶ Sohar Cement Employees 78 tree



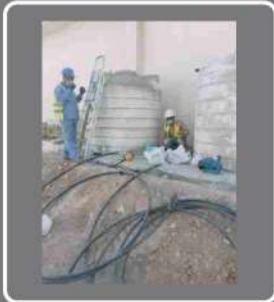


مصنع إسمنت صحر
SOHAR CEMENT FACTORY

Special Achievements



- Install water two tank with water motor for the irrigation system



- 80% of the work of the induction security room is completed





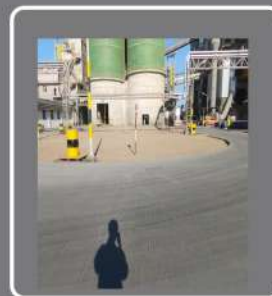
Best Practices Implemented



- Fixed the water leaking on the main valve of Fire Hydrant Cabinet near the Shed material



- Continuation Clean the area and put the Aggregate material



- Clean the area around the shed material





miscellaneous news



- Recycle damaged plastic cement bags by ALQammah ALMumaiza Projects
- The total the recycle plastic cement bag = 5620 KG



➤ WASTE OF LANDFILL & RECYCLE MATERIAL

WASTE

• Waste to Landfill (Measured in kg) in January 2022 = 161480

WASTE

• Waste to Landfill (Measured in kg) in February 2022 = 2500

WASTE

• Waste to Landfill (Measured in kg) in March 2022 = 2300

WASTE

• Recycle cement from packing plant area in January 2022 : around (754 Ton)

RECYCLE

• Recycle cement from packing plant area in February 2022 : around (484 Ton)

RECYCLE

• Recycle cement from packing plant area in March 2022 : around (129.44 Ton)



مصنع إسمنت صحار
SOHAR CEMENT FACTORY



➤ Jumbo bag cement

- Recycle cement in January 2022 :
• around (135.2 Ton) Recycle
• cement in February 2022 :
around (88.4 Ton)
Recycle cement in March 2022 :
around (45 Ton)



➤ COVID-19- Disinfect





Best Practices Implemented



➤ Moving Sign Board

- Safety signs are crucial to workplace safety. There are many actives in our site and some they actives be temporarily.
- We animated banner has been created

Mechanical Department
and HSE Team



➤ Oil Containment

Waste Management is important for environment protection because any kind of waste - liquid or solid is an environmental , health and safety hazard. So, in Sohar Cement team we made the Oil Containment for the control the containment for oil and grease waste

(Mechanical Department)





Best Practices Implemented



➤ Mechanical Department DIVERTING GATE MODIFICATION

- ISSUE – Cyclone to mill diverting gate was not fully opening and closing.
- Problem Identification – Cyclone to mill diverting gate hydraulic cylinder oil leakage from both seals

Corrective Maintenance – we install repaired cylinder with new seals replaced and serviced.



➤ SLIDE GATE MODIFICATION

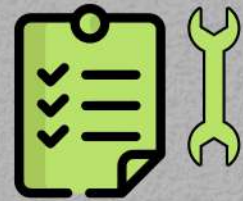
- ISSUE – Silo 1 to packer 1 and 2 motorized hydraulic gate oil leakage.
- Problem Identification – Silo 1 to packer 1 and 2 hydraulic gate oil seal leaking a lot and coating was getting accumulated inside and sometimes its stop operating due to oil low level.
- Corrective Maintenance – We analyze that many problems were being created due to oil leaking that's why we install pneumatic cylinder assembly instead of hydraulic cylinder.





Best Practices Implemented

➤ DIVERTING GATE MODIFICATION



• ISSUE – Cyclone to mill diverting gate was not fully opening and closing.

①

Problem Identification – Cyclone to mill side diverting gate flap worn-out and after closing the gate material leak from worn-out area.

②

Corrective Maintenance – We analyze and found all diverting gate does not have inspection point to inspect inside condition. •We take below step.

③

First, we need to be flap repaired and make inspection door due facing jam many times and easy inspect gate condition.

④

Diverting gate wall worn-out so we replaced and make inspection point.

⑤

Conclusion – After modification we reduce 90% material spillage from mill inlet.

-Issue Diverter gate was not fully opening or closing.

-Problem Identification – Cyclone to mill side diverting gate hydraulic cylinder oil leak.

Before



After





Best Practices Implemented



- the weighbridges has checked with standard test weight and calibration for all the weigh bridges in gate No.01 and 02.



- (Electrical Department)



- The weigh feeder has checked with standard test weight and calibration for all the weigh feeders.



➤ Special Achievements

- ☑ Replace the clinker weigh feeder controller with new one to maintain the Accuracy of the equipment.



MISCELLANEOUS NEWS



- Training, communication and awareness.Risk Assessment.



FIRE SYSTEMS

- ▶ Maintenance of our fire system has been
- ▶ Carried out.
- ▶ Fire system inspected



- Spills In The Store.RESPONDED BY THE ERT.



Before



After

MISCELLANEOUS NEWS



➤ INSTALLATION OF HANDRAILS IN THE DDPC AND CLEARING OF DEBRIS ON THE STEPS



➤ BREAKING AND CLEARING OF CLINKER BUILD-UP IN DDPC.

➤ INSTALLATION OF ACCESS ROUTE.



➤ HOUSE KEEPING.





Raysut Maldives Cement
ريسوت المالديف للإسمنت

Raysut Maldives Cement

- Sales volume reflect growth of 116% M-o-M in Mar'22 with volumes of 9004 tons.
- Total Sales of Jan-Mar'22 stand at 32,801 tons, a growth of 116% compared to last year despite adverse market conditions & supply constraints of stock



Commercial

- OPC 42.5R for Concrete Mix and GGBFS approved by Afcons for the Thila-Male' bridge mega infrastructure project for the initial phase of construction.
- JMC Projects Director visited the terminal to discuss the possibility of supplies to their Social Housing Project in Hulhumale which requires around 58,000 tons of OPC.
- Kicked off first SRC supplies to distributor Sonee Hardware with the first order of 275 tons.





Health, safety and environment news





Accidents and Incidents

Accidents and Incidents

The company continues to work towards a Target of Zero Accidents and Incidents to meet the goal of Zero Accidents and Incidents by 1 January 2024. As the table below indicates the company are within the targets set for 2022 for TRIR and slightly above target for LTIFR

Target TRIR	≤4
Target LTIFR	≤0.5
TRIR	3.02
LTIFR	0.80

Environmental Social Corporate Governance

- ▶ Rgroup of companies continue to put HSSE at the forefront of all that we do, in 2022 we aim to improve our environmental performance accross our BU's working with local Environment Agency and partners to improve our environmental performance.
- ▶ Waste
In 2022 all BU's have a target to reduce waste to landfill by 5%, to achieve this we have embarked on recycling initiatives at each BU currently we are undertaking the following initiatives:
 - Reuse all spillage materials back through the process
 - Recycle waste oils, wooden pallets, batteries, scrap steel and copper
- ▶ Air Quality
We continue to monitor our emissions at each factory and forward quarterly monitoring reports to Environment Agency, to date RCC Group of Companies have had no emission exceedances.

In 2022 we will further develop our environmental stewardship by protection of the natural environment through conservation and sustainable practices.



Environmental Social Corporate Governance

- ▶ **Green Spaces**
Continue to develop green spaces in all our BU's one such success story is the treeplanting at Sohar Cement Factory.
- ▶ **Air Quality Management**
RCC Salalaha is working with Oman EA Climate Change to assist in improving Air Quality in Dhofar Region. RCC will relocate the current Air Quality Management Station to a new location to assist the EA in gathering more meaningful data to support Oman's Air Quality Vision 2030.

Community Support

- ▶ RCC Salalaha continues to support Local Educational establishments by delivering safety and environmental awareness programs.

Tool Box Talks

- ▶ Due to number of hand related injuries in March the April Tool Box Talk is on Hand Gloves all managers and supervisors to deliver this TBT and ensure that employees and contractors use hand gloves as required.



Monthly Safety Topic

► Lifting Equipment

Prior to any lift ensure the following points:

- Lift is planned and lifting plan and/or risk assessment is in place
- The lift has been assessed by competent person
- The lift is slung by competent person
- The load is within the rated capacity of the lifting equipment; mobile crane, overhead crane, hoists etc.
- Area is protected from people entering

- All equipment is checked for defects and if required inspection reports are in place

During Lifts - Never

- Walk under suspended load
- Move load over people
- Enter any area that is barricaded off
- Operate equipment outside rated capacity
- Use defective equipment

► Pictures - Examples Damaged Equipment



Failure of lifting equipment can result in serious
or fatal injury - If in doubt speak to your



MORTGAGE APPLICATION

APPLICANT INFORMATION

Name: _____ Date of birth: _____ SSN: _____ Phone: _____
Current address: _____ City: _____ State: _____ ZIP Code: _____
Own / Rent (Please circle) Monthly payment or rent: _____ How long? _____
Previous address: _____ City: _____ State: _____ ZIP Code: _____
Own / Rent (Please circle) Monthly payment or rent: _____ How long? _____
Current employer: _____ Employer address: _____ City: _____ State: _____ ZIP Code: _____
Phone: _____ E-mail: _____ How long? _____
City: _____ State: _____ Fax: _____
Position: _____ Hourly Salary (Please circle) Annual income: _____
Previous employer: _____ City: _____ State: _____ ZIP Code: _____
Address: _____ Phone: _____ E-mail: _____ How long? _____
City: _____ State: _____ Fax: _____
Name of a relative not residing with you: _____ City: _____ State: _____ ZIP Code: _____
Relationship: _____ Phone: _____ E-mail: _____ How long? _____
City: _____ State: _____ Fax: _____

JOINT ACCOUNT

Name: _____ Date of birth: _____ SSN: _____ Phone: _____
Current address: _____ City: _____ State: _____ ZIP Code: _____
Own / Rent (Please circle) Monthly payment or rent: _____ How long? _____
Previous address: _____ City: _____ State: _____ ZIP Code: _____
Own / Rent (Please circle) Monthly payment or rent: _____ How long? _____
Current employer: _____ Employer address: _____ City: _____ State: _____ ZIP Code: _____
Phone: _____ E-mail: _____ How long? _____
City: _____ State: _____ Fax: _____
Position: _____ Hourly Salary (Please circle) Annual income: _____
Previous employer: _____ City: _____ State: _____ ZIP Code: _____
Address: _____ Phone: _____ E-mail: _____ How long? _____
City: _____ State: _____ Fax: _____

APPLICATION INFORMATION CONTINUED



الشريك الإستراتيجي للنمو
Strategic Partner for Growth

