

# Monthly Magazine



شركة ريسوت للأسمنت ش.م.ع.  
Raysut Cement Company S.A.O.G



- RCC has added one more feather in the hat: supplying Chromium VI free cement to Indian ocean/ French re-union islands.

- Internal SAP Training for Weighbridge/Dispatch personnel

- Raysut Maldives Cement achieved the highest monthly sales in the company's history



CEO-Mr. Joey

Dear Colleagues,  
Ramadan Kareem!

We continue to suffer the catastrophic effects of the COVID 19-pandemic both in loss of lives of our near and dear and, the negative impact on business.

Whilst we push on with production and sales, we can now directly feel the impacts of the pandemic on our business in that sea freights and commodity prices (coal) are skyrocketing. All of these are impacting our costs and hence profitability. The domestic markets remain subdued and we continue to survive on exports.

On the brighter side, our Maldives unit is doing rather well, in spite of the movement restrictions and now all our ships are fully occupied.

In this holy month of Ramadan, I wish all you all the blessings to make this Ramadan the turning point in your lives.





### Cement free of chrome



- RCC has added one more feather in the hat by supplying first assignment of Chromium VI free cement to Indian ocean/ French re-union islands.
- This mission of producing Chromium VI (Water-soluble) free cement was achieved by RCC team at Salalah without any external support like third party consultancy etc.
- The cement supplied conforms with the CE & NF Certifications which we acquired very recently from AFNOR, France.

Following is the snapshot of this achievement:

- Initially RCC clinker and cement had chromium VI contents of more than 100 PPM.
- By modifying the raw materials recipe in pyro processing Chromium VI Content reduced from 100 to 2030- PPM.
- After that, further reduction of Cr6+ contents, through treatment by chemical reagents, now the Chromium VI is well reduced to negligible, less than 2 PPM.
- In March 2021, RCC has dispatched two different qualities of no chrome cement (Portland and composite) to EU territories. The cement now conforms the requirements of reach regulation of the European Union for Chromium VI (water soluble) less than 2 PPM.

### Operations

- Successfully completed mid-year shutdown for Kiln unit in record time.
- Electricity consumption kept within the target despite of shutdown to achieve AED 1 million saving for the month.



### Admin

- HSSE Induction & training for all employees & badge distributed.
- Rightsizing of people concluded to optimize the cost.



### Sales

- Internal SAP Training for Weighbridge/Dispatch personnel
- Sales Target achieved (Target -65,000 MT; Achieved - 66,000 MT approx.)
- Highest collection figure in comparison of last 4 month (AED 10 million approx.)







## Operations



- Achieved Highest Monthly Sales of 7447 mts in the History of the company



- Closed Deal with MMTC, through STO, to supply 42.5R for 9000 cbm Ready Mix Concrete (3650 tons) for WAMCO Project.



- Signed off deal with Rasheed Carpentry & Construction, one of the Biggest Private Construction Firms to supply cement (42.5R & 42.5N) through STO for two 14 story towers in Hulhumale



## Sales



- Working on enlisting for supply of cement for project of 34 islands Water Treatment & Sewerage Treatment awarded to several Indian contractors.



- In spite of the 12 hours vehicle curfew hampering loading & deliveries, achieved 4800 mts in Mar'21.

## Operations



- Accepted pneumatic shipment from a new vessel NACC MILBURN \* for 7200 mts & discharged within the timing norms



## Health and Safety Security Environmental

### LOST TIME INJURY

The LTIFR Target for 2021 is 0.75 as we work towards our Goal of Zero Injuries

To date the LTIFR for the Group and BU's is shown below:

• Group	0.46
• RCC	0.00
• Sohar	0.00
• Pioneer	1.78

### Health at work

Pioneer injury employee hand came in contact with moving machinery resulting in soft tissue damage and bruising.

### Covid 19

During March the numbers of cases in Oman has risen it is important to keep ourselves and our families and friends safe we continue to follow the Covid19 Guidance.

Covid19 documents are available in Tawasol for information a new travel guidance document has been produced and is awaiting committee approval.

Covid19 vaccination program we will send information regarding vaccine program in our next issue. The vaccines available and roll out will be discussed at Covid19 committee meeting on 1 April 2021.

If you require further information, contact Male Nurse or Covid19 committee (Mr. Tawfiq, Mr. Khalid Al Ibrahim, Mr. Manash).

### Pioneer

Improved access to CEMS Station



### Health and Safety Security Environmental Section

"We believe that safety of our people and protection of the environment is good business and that all work-related injuries, illnesses, property losses and adverse environmental impacts are preventable".

### New Contractor Guidance

RCC has recently issued new contractor guidance to support our contractors working at our facilities, during the month of March we rolled out the following guidance documents:

- Electrical Guidance
- Scaffold Guidance

### Sohar

Upgraded diesel storage tank to meet requirements of Civil Defence.

### Environment

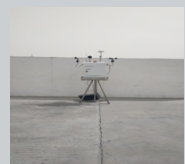
• Environmental monitoring has been undertaken at each BU.

• Recycling and Reuse of waste materials is one of our key focusses in 2021.

• Environmental Noise Monitoring at site



### Ambient Air Quality Monitoring at site





## Security, safety, environment and health

### 6 Core Elements of Successful Safety Programs

Safety Culture	Employee Contractor Engagemen
Employee Empowerment	Employee has right to challenge unsafe acts or conditions
Hazard Identification	Part of the job
Maintaining Compliance	Following the rules
Continuous Improvement	Improving our work environment
Leadership	Lead by example

#### Business Unit Roundup

- Duqm Terminal has improved security at the site by installing a wire fence along the perimeter wall.

- a new project has commenced

#### RCC

Has recently recycled a large quantity of material from site, this included; steel, wooden pallets AND IBC's

#### Chemical Management

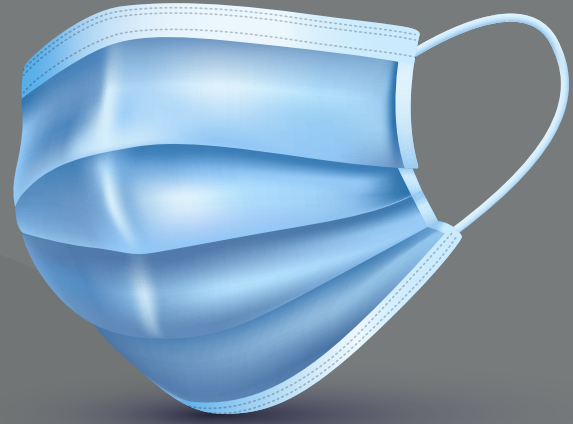
Sohar laboratory very clean and very good chemical labeling and storage.



#### WAH

Program to improve Height Safety at factory by installing safety lines across mills and kilns and improve work platforms in key areas of the plant.





**Do not forget to wear the protective mask**



**Wash your hands well with soap and water**



**Stay away from gatherings for you and your family**